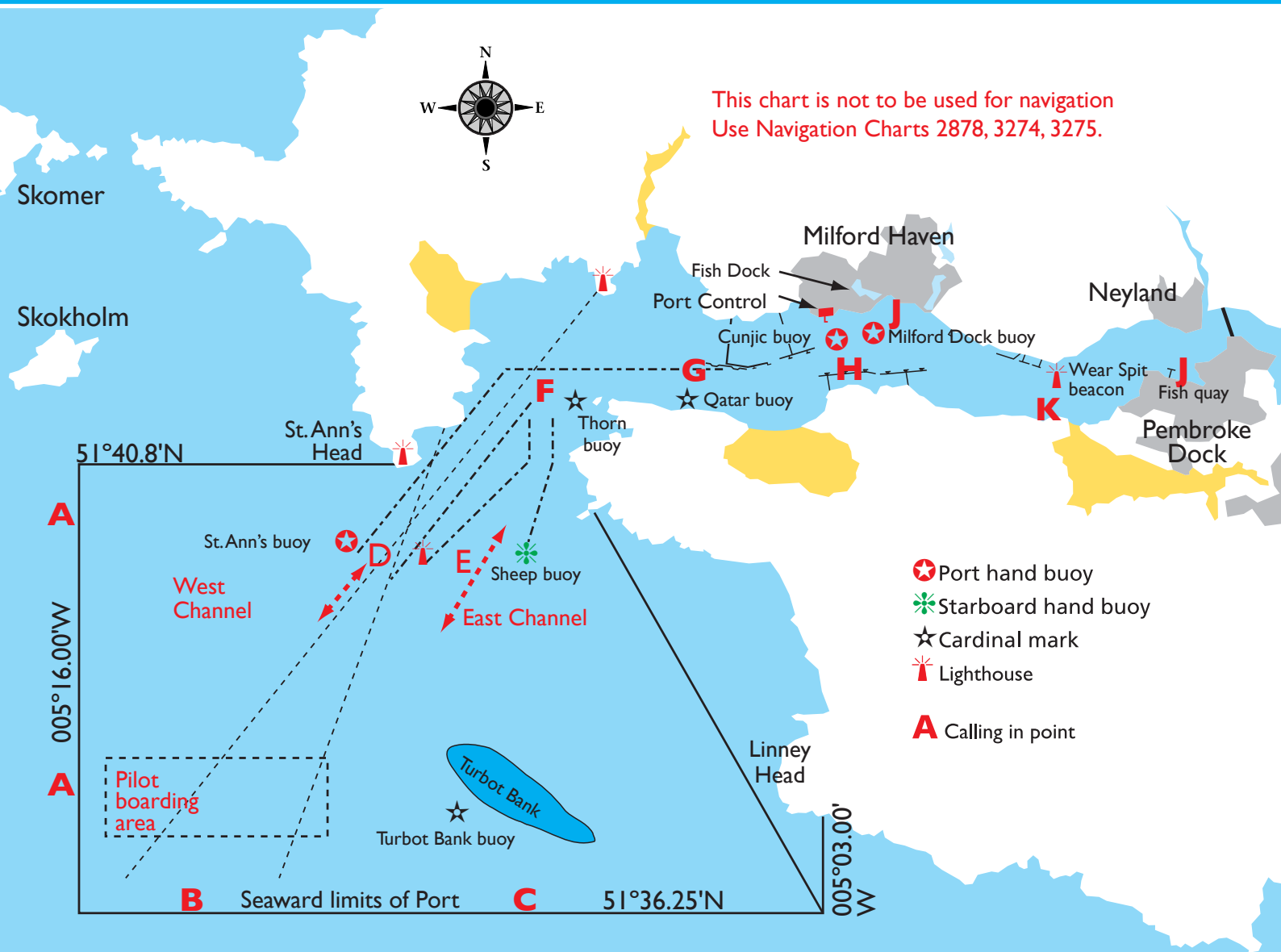


Fishing vessels entering Milford Haven



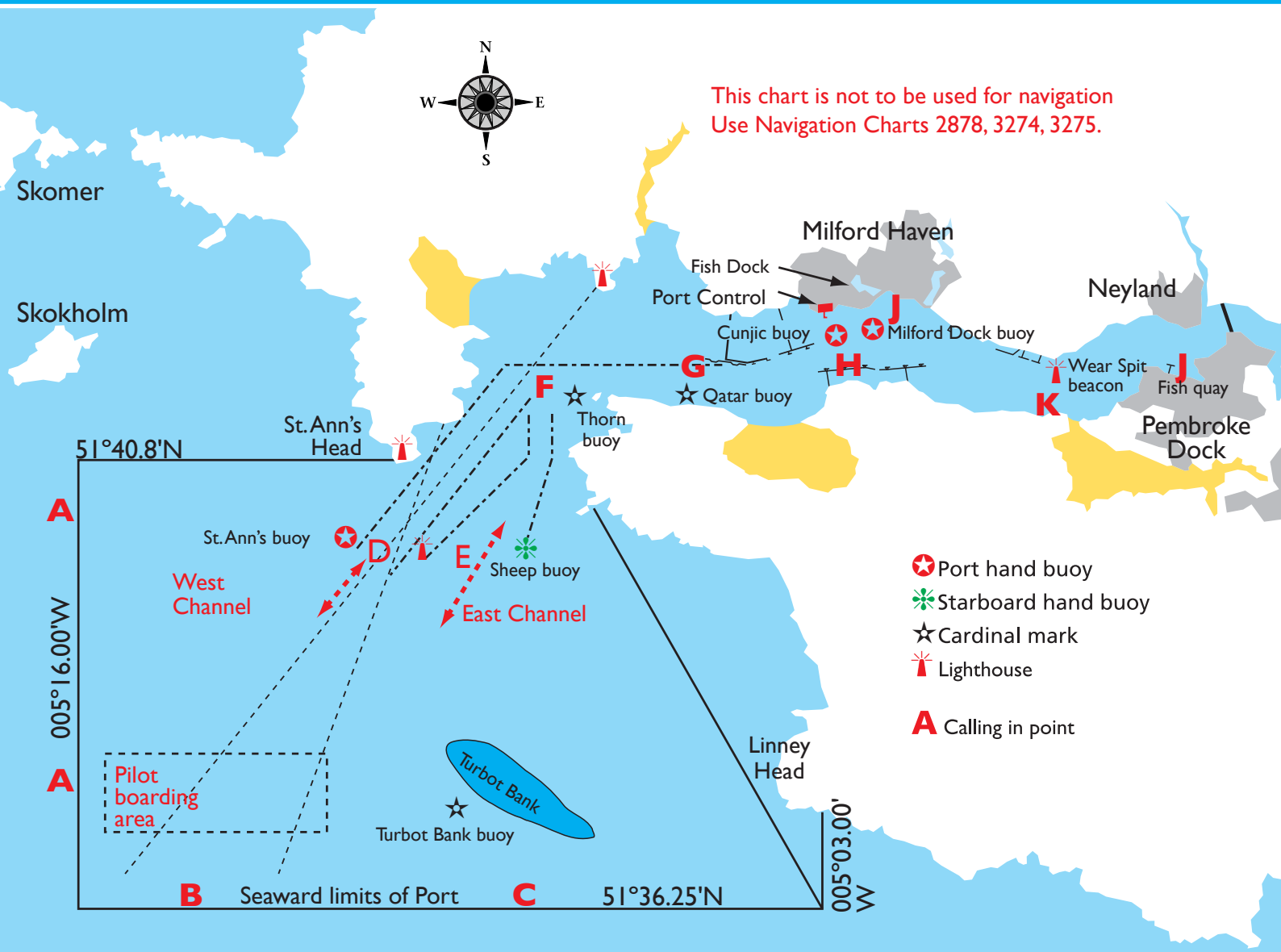
1. Call Port Control on Channel 12 one hour before arrival at St. Ann's Head.
2. At Reporting Positions A, B and C, call Port Control on Channel 12 for permission to enter. Port Control will inform either west or east channel or to remain three miles from port entrance until further instructions given. Vessel to remain on channel 12 until alongside.
3. Inform Port Control when entering west/east channel (Point D/E).
4. Always use the starboard side of the channel.
5. Inform Port Control when at Reporting Point F (Thorn Rock buoy).
6. Inform Port Control when at Reporting Point H (Cunjic buoy). If going to Milford Dock request clearance to cross the channel.
7. Inform Port Control when at Reporting Point K (Wear Spit).
8. Inform Port Control when alongside Pembroke Port or in Milford Docks.
9. Do not pass any closer than 100 metres from oil jetties.
10. Do not overtake oil tankers without permission.



Milford Haven Port Authority

The Harbourmaster
Milford Haven Port Authority
PO Box 14
Milford Haven
SA73 3ER UK
Telephone: +44 01646 696136
Fax: +44 01646 696110

Fishing vessels leaving Milford Haven



1. Contact Port Control on channel 12 before leaving Pembroke Port or Milford Docks for permission to leave. Remain on channel 12 until clear of west/east channel.
2. Inform Port Control when leaving Pembroke Port or Milford Docks (Point J).
3. From Port of Pembroke inform Port Control when at Reporting Point K (Wear Spit).
4. Always use the starboard side of the channel.
5. Inform Port Control when passing Reporting Point H (Cunjic buoy).
6. Inform Port Control when passing Reporting Point G (Qatar buoy). Port Control will inform fishing vessel which channel to use, west or east.
7. Inform Port Control when clear of west/east channel.
8. Do not pass any closer than 100 metres from oil jetties.
9. Do not overtake tankers without permission.



Milford Haven Port Authority

The Harbourmaster
Milford Haven Port Authority
PO Box 14
Milford Haven
SA73 3ER UK
Telephone: +44 01646 696136
Fax: +44 01646 696110